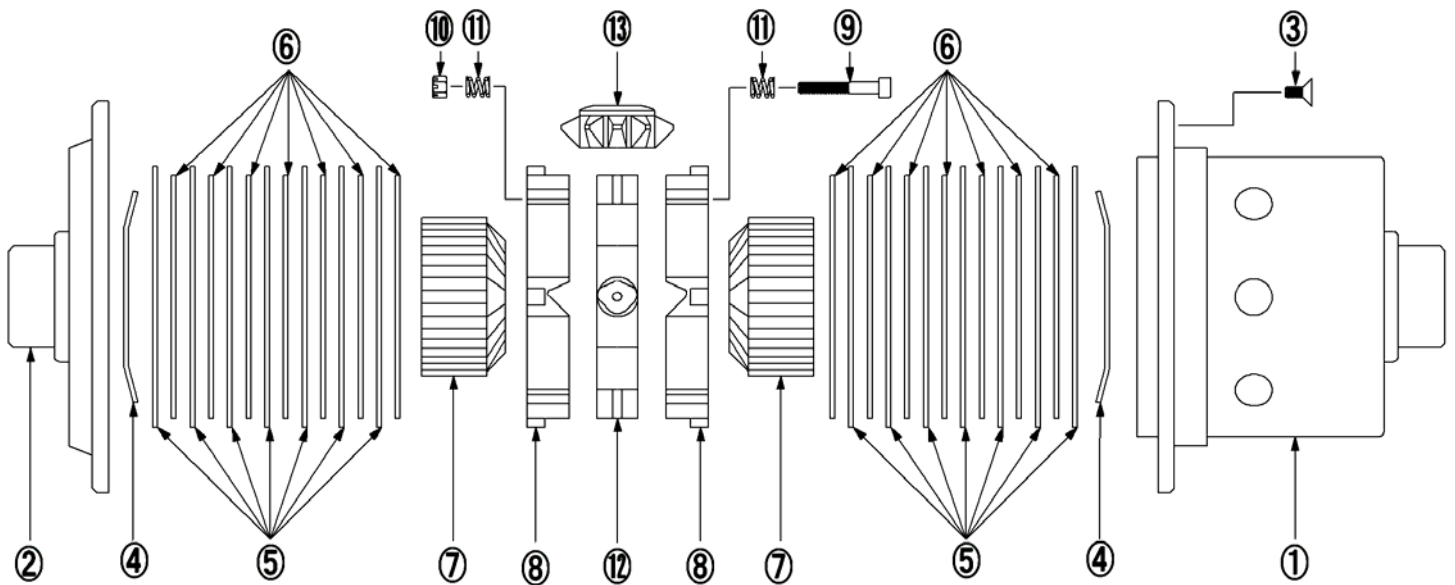


OS Super Lock L.S.D.

SETTING MANUAL

When you do setting of OS super lock L.S.D., Please read these instructions and do setting, assembling justly after having understood contents.

- - - OS Super Lock L.S.D. Parts name - - - - -



#	Parts name
	Differential Case
	Differential cover
	Flat-head screw
	Cone spring
	Outer disk
	Inner disk
	Side gear

#	Parts name
	Pressure ring
	Bolt for pressure ring
	Nut for pressure ring
	Spring for pressure ring
	Cross pin
	Pinion gear

We assume a part consisting of _____, a pressure set.

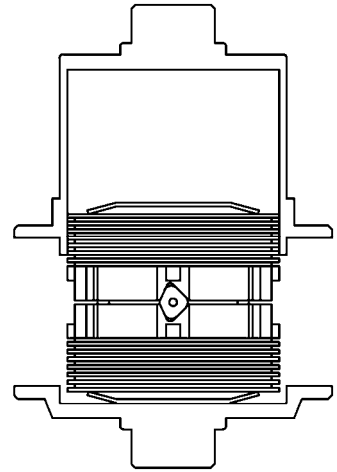
The figure mentioned above and the name get the basis and explain following explanation.

1. Open differential case.

- Put a cover below and unscrew 4 flat-head screw.
- Pull out Differential Case in right above.

Caution!

- At the time of assembling, put a certain inside part in Differential Case on Differential Cover in a turn and direction as is.



2. Put Differential Spring in Differential Case.

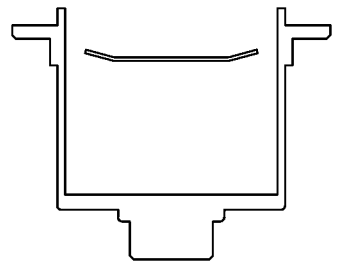
- Prepare a Cone Spring according to initial torque of specifications.
- Put a Cone Spring in a bottom of Differential Case.

Be careful to directions!

- The outside of a Cone Spring holds a disk.

Be careful to positions!

- Put the center of a bottom of Differential Case.
It becomes cause by the fact that a cover does not close when it slips off.



3. Put a disk in Differential Case.

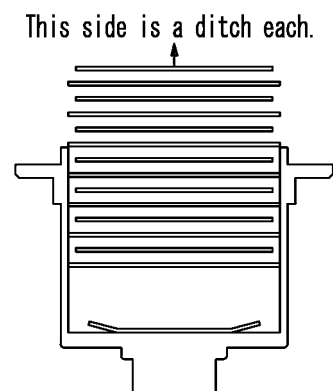
- Put a certain disk in Differential Case on Differential Cover.

Be careful to directions!

- Insert so that an aspect with a ditch of a disk is suitable for a pressure set.

Be careful in turn!

- Become next to a Corn Spring, outer-disk, inner-disk, outer-disk, inner-disk in turn.

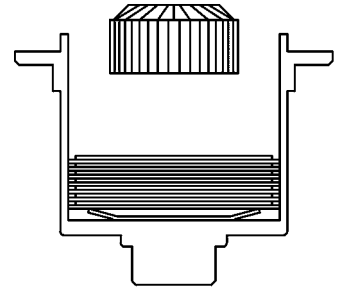


4. Put Side Gear in Differential Case.

- Take out a certain Side Gear on Differential Cover and insert it in Differential Case.
- While turning a Side Gear in right and left till you hit a base of Differential Case.

Important !

- Put a Side Gear to a base by all means.



5. The resolution of a Pressure Set.

Important !

- Remember the direction where a Pressure Set was in Differential Case which will be necessary when you insert into Differential Case.
- Take out a certain Pressure Set on Differential Cover.

Caution !

- Remember the direction where a P volt entered which will be necessary when you assemble.
- Take off a P bolt and a P nut in a screw driver for exclusive use of setting and a hexagon wrench and take out a P spring

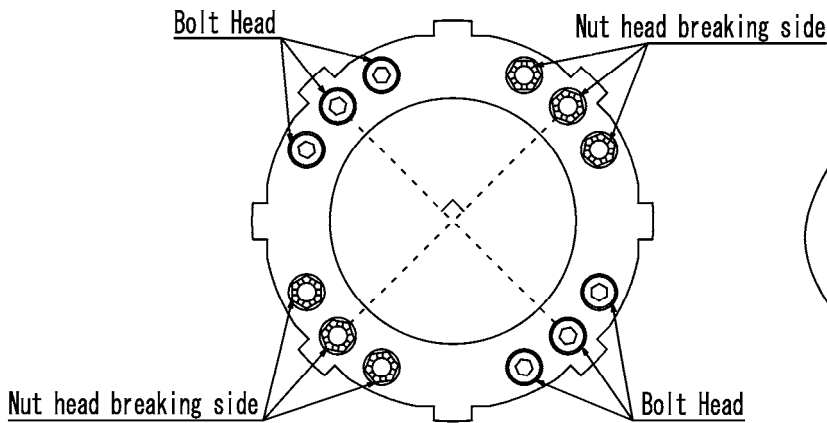
Caution !

- Select a P spring.

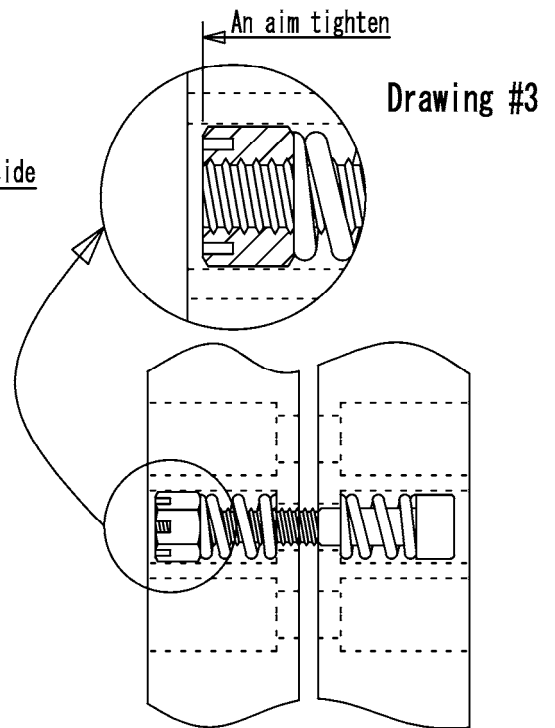
Load	Diameter of wire	Number of wind-up
18kg	1.5mm	4 times
28kg	1.8mm	4+1/6 times
38kg	1.8mm	4 times

6. Assembling of a Pressure Set.

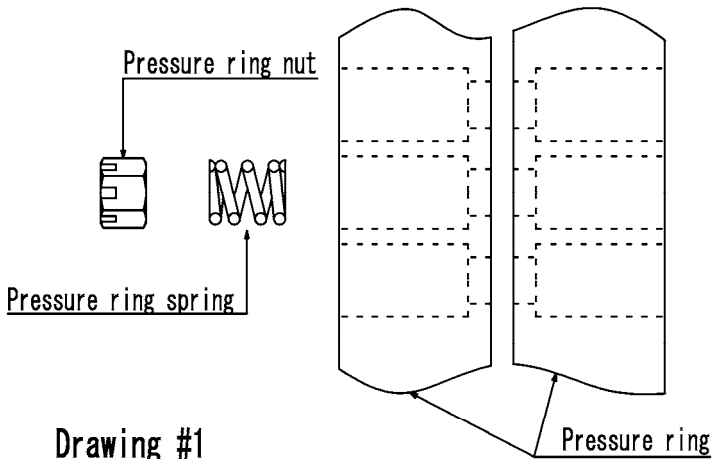
- Prepare a P spring in accord with the P spring total kg number of specifications.
*Refer spring rate table.
- Insert P spring into pressure ring hole.
*Refer spring position figure.
Caution! • There is the situation when a P spring, a P bolt, a P nut are not in all holes of a pressure ring by specifications
- Direction putting a P bolt becomes the opposite angle is the direct, A hole next to each other in 90 ° grows to reverse.
*Refer Drawing #1
- Incorporate a P spring in a Pressure Ring with a P bolt and a P nut.
*Refer Drawing #2
Caution! • Apply tight 243 after having removed fat with a P bolt and incorporate.
Important! • An aim you tighten a P volt, and to be crowded is the position where the tip of a P bolt and an end face of a P nut become the same.
*Refer Drawing #3



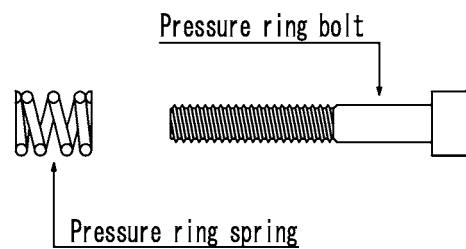
Drawing #1



Drawing #3



Drawing #1



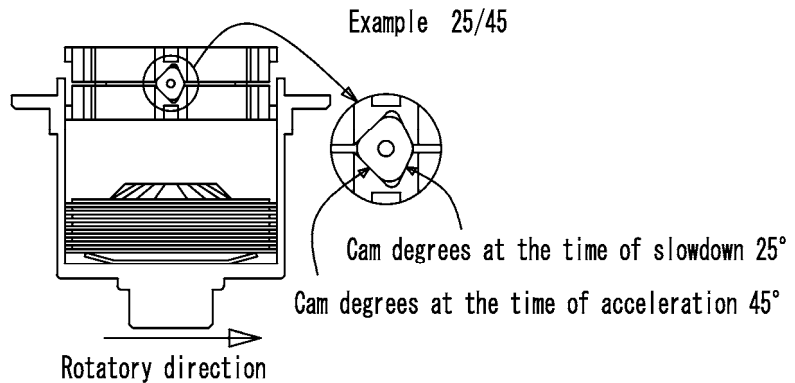
7. Put Pressure Set in Differential Case.

- Put Pressure Set in Differential Case with care.

Important !

- Direction to insert of Pressure Set is basically as per drawing.
Please ask OS Giken when direction of Pressure set is uncertain.

- Caution ! • To be caught surely Pinion Gear of Pressure Set to Side Gear.

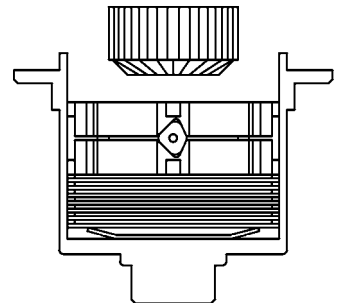


8. Put Side Gear in Differential Case.

- Remove Side Gear on Differential Cover.
- Put Side Gear in Differential Case.

Caution !

- To be caught surely Pinion Gear of Pressure Set to Side Gear.



9. Put disk in Differential Case.

- Put disk on Differential Cover in Differential Case.

Be careful to directions !

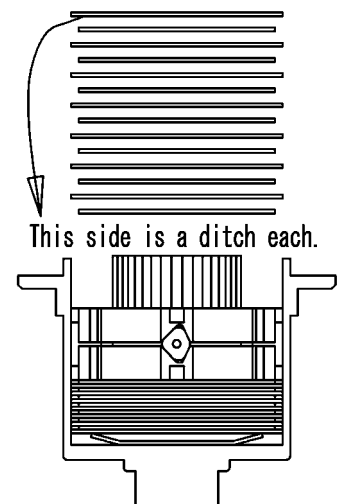
- ditch of a disk to be in the pressure set side.

Be careful to turn !

- Put inner-disk after Pressure Set, then outer-disk,
inner-disk, outer-disk.

Caution!

- Some type of Differential Case and Cone Spring
Is not able to insert outer-disk in Differential Case.
In this case, put outer-disk at center of Differential Case of a ditch.



10. Put Cone Ring in Differential Case.

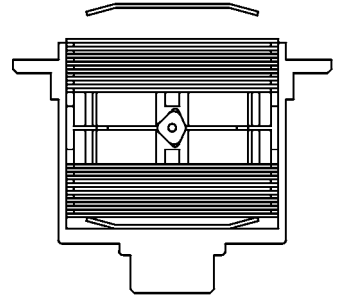
- Use same type of Cone Spring prepared above #2.
- Put Cone Spring on top of Differential Case.

Be careful to directions !

- Outside of Cone Spring press disk.

Caution !

- Outside of outer case grazes from a case, to be careful so that outer disk does not move.



11. Put Differential Cover in Differential Case.

- Put Differential Cover on Differential Case along a mark.

Caution !

- There is a ditch in Differential Cover for inserting Cone Spring.

Important !

- Do not rotate Differential Cover after having put Differential Case matching a mark otherwise disk and Cone Spring will be slipped off.

Caution !

- Be careful not to slip off Cone Spring, outside of outer disk grazes from a case,
- To some extent, fasten a flat head screw in a state as is equally.

Caution !

- Disk and Cone Spring grazes if Differential Cover side lower without tightening flat head screw.
- If to some extent flat head screw tightened, lower Differential Cover side and flat head screw tighten until a gap of Differential Case disappears.

Important !

- Though a gap becomes vacant, flat head screw is not tighten, Cone Spring and a disk may slip off.
- Take off a cover then and re-confirm it.

